



Portalroboter/
Automationen



Elektrohand-
schrauber



Schraub- und
Setzsysteme



Förderbänder



Bunkersysteme



Schrauben- und
Kleinteileportionierer

**Hammer
Automationstechnik GmbH**
Freudenstädter Str. 14
72227 Egenhausen

Telefon: 07453 8108
Telefax: 07453 1774
E-Mail: info@hammer-automation.de
Internet: www.hammer-automation.de



Hammer Automationstechnik is your partner for automation technology and special solutions. Since 1993 the company manufactures and sells automation technology and special solutions for the German and European clientele.

In addition to the distribution of **automation components, handling and assembly systems**, the core competence of the company is the development of **individual automation solutions**.

The combination of innovative thinking and many years of experience results in customer-specific implementation for production automation and production optimization.



- 1993** Founded by Mr. Reiner Hammer
- 1997** Office extension to 60 sqm
- 2007** Move to a new company building 110 sqm
- 2008** Development of the „screw- and small parts portionier“ (patented)
- 2009** Expansion of the production area
- 2013** New office building 200 sqm
- 2018** New building with 1100sqm





Kolver FAB / RAF

For industrial production for torques of **0.05 - 3.8 Nm** with separate control unit. The screwdrivers are characterized by their **innovative shut-off clutch**, compact design and person-independent **torque control**.



Kolver PLUTO

For industrial production for torques of **0.01 - 50 Nm** with separate control unit. The screwdrivers are characterized by their **innovative power cut-off**, compact design and person-independent **torque control**. Also available with rotation angle control.



Kolver KBL

For industrial production for torques of **0.04-4.0 Nm** with separate control unit. The screwdrivers with the **brushless motor** are characterized by their **innovative shut-off clutch** and their compact design





Screwdriver with feeder



Screw unit with five Screwdrivers



**Screwdriver with
torque- and angle control**



Torque tester



Torque Tester K



Intelligent Torque tester



Torque tester K mini

With these **torque testers**, screwdrivers can be set or controlled with high precision to the required torque. A screwdriver simulator can be used to simulate the desired screwdriving case (hard or soft). The device is portable and battery powered. The intelligent torque sensor can be used to **carry out bolting** analysis with **screw cam recording**.





Linear support arm



Parallel support arm



Carbon support arm

By recording the tool weight and secure positioning on the workpiece a largely non-fatiguing work is possible. The tools are ergonomically guided and the torques of screwdrivers, drills, tapping units, etc. are intercepted. Tripods / carbon arms are also available as optional positioning arms and articulated arms.



Screw- and small parts dispenser



The **screw- and small parts dispenser (PICKbyHAND)** is ideally suited for mounting on assembly lines small parts, e.g. to provide screws, nuts, expanding rivets, caps (also plastic) or screw-like parts counted in a portioning compartment independent of person. The ergonomic quick-release system allows the production worker to remove the parts safely and quickly.

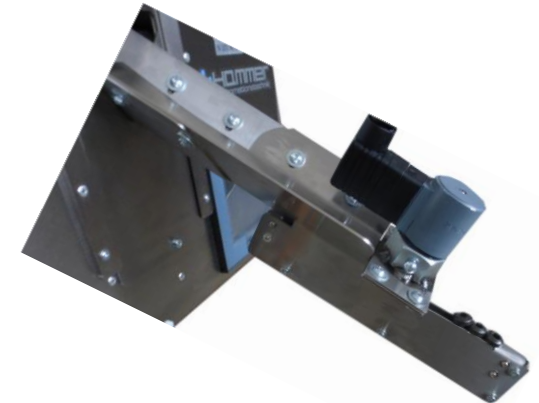




PICKbyBox

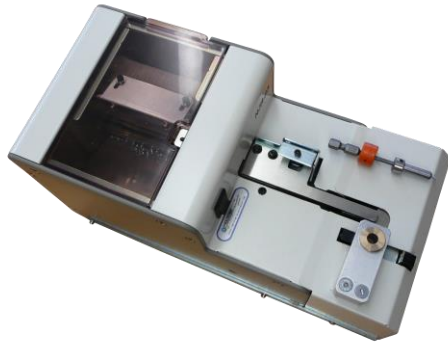


**Assembly workstation with
15 SKP's (Ethernet)**



PICKbySCHIENE

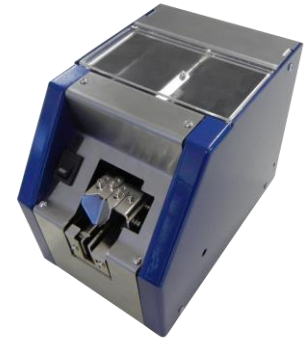




Quicher NJR 23



Quicher FM 36



Kolver NFK

With the automatic **screw dispenser**, the screws or screw-like parts are placed in the filling chamber. When the device is switched on, the screws are brought one after the other to the acceptance position and remain there until they are removed.





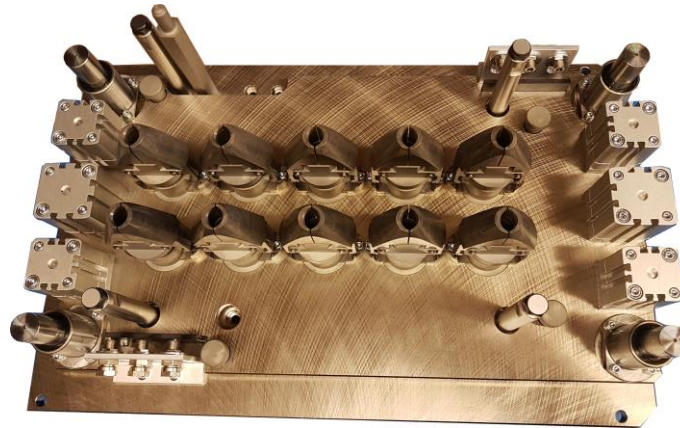
The developed modular system of screwdriving and joining technology is fully compliant with the requirements of modern factory automation due to its advanced technology and adaptability.

From screwdrivers without feeders to high-tech screwdrivers with automatic feed, our screwdriving technology offers trend-setting application possibilities.





Screwing station for pumps



Screwing station for motor block



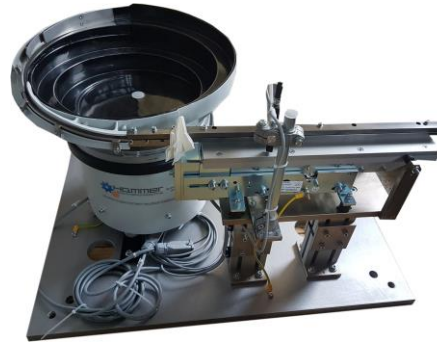
Expander sealing plugs





Spring Separator

Our Feather Drum Whirlwind (Type FTE-2122) has been designed to unravel entangled parts that were previously unable to adequately disentangle the worker.



Feeder bowls

Feeder bowls are suitable for pre-sorting, sorting, conveying and providing parts. They are used e.g. in the automotive, engineering, electrical industry.



Step Feeder

The paddling lifting / swinging segment conveys the components from the stationary parts container to the sloping discharge rail. Due to their own mass, the products slide in the correct position to the separation point or point of provision. No vibration damages the components or generates harmful noise





Conveyor belt FB



Angle conveyor belt WFB



Chain conveyor belt

These **conveyor belts** have been developed for the transport and removal of parts, chaining workstations, processing and assembly equipment, etc. Thanks to their compact and robust design and their versatile accessories, they can be used almost indefinitely.





Special applications





Our **steep conveyor SF042** was specially developed for storing and dosing various parts. The construction ensures the simplest filling while at the same time gaining height thanks to the inclined arrangement.



Our **filling hopper** was specially designed for storage and dosage developed various parts. As standard, we supply all sheet metal parts as well as drive and deflection pulleys in VA



Our **hopper belt** was specially developed for storing and dosing various parts. The construction ensures the simplest filling with simultaneous gain in height by the oblique arrangement.





System to demagnetise springs



Oil bath hopper system



Turn-, Feeding-, Buffer plate



Turn plate

The ideal device for filling a freely selectable number of containers in bags or cartons etc. with a defined subset.



Feeding plate

Feeders are designed to gently feed sensitive workpieces - in conjunction with automated handling. The workpieces are placed by hand on the plate and fed through sorting baffles in the correct position.



Buffer plate

Buffer plates have been developed to gently buffer sensitive workpieces and to provide greater autonomy, e.g. to reach at automatic lathes.

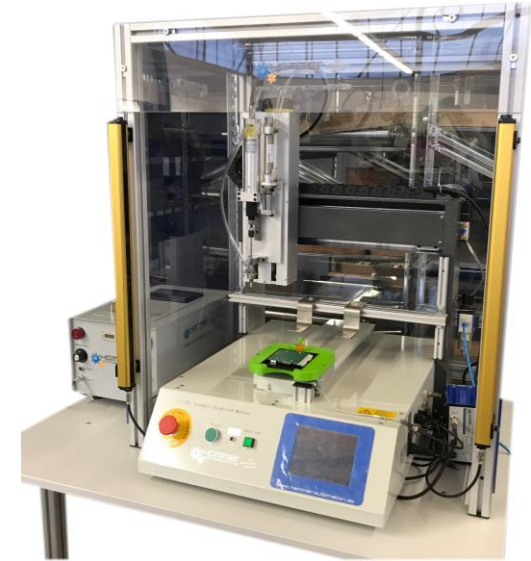




Screw and soldering robot



Screw and dosing robot

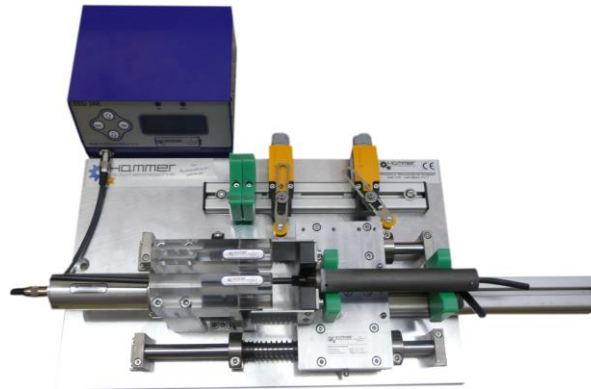
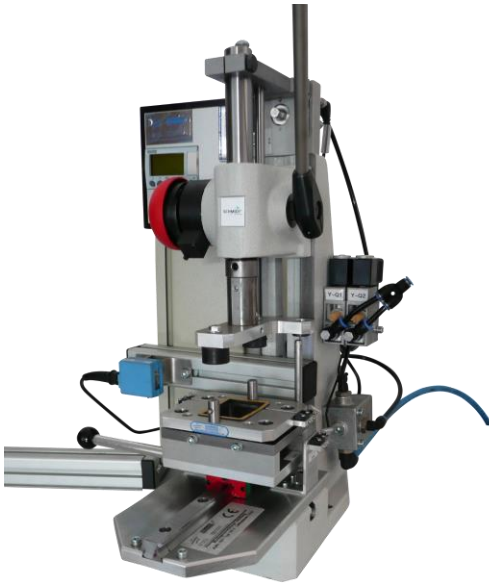


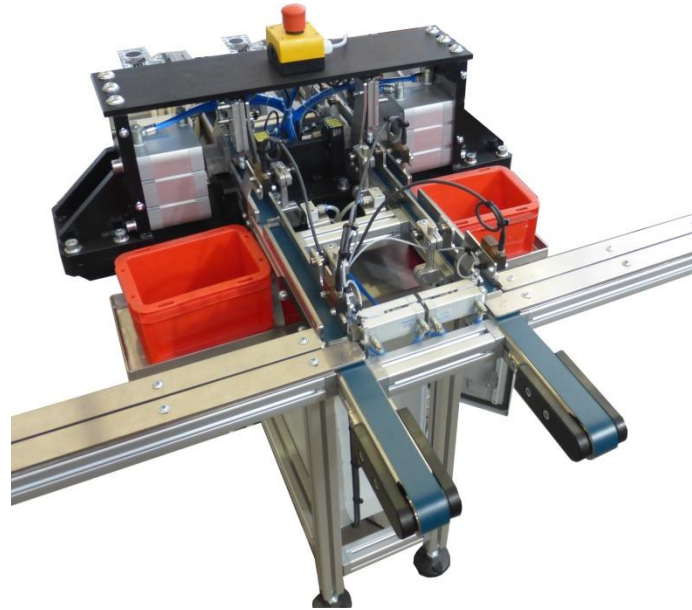
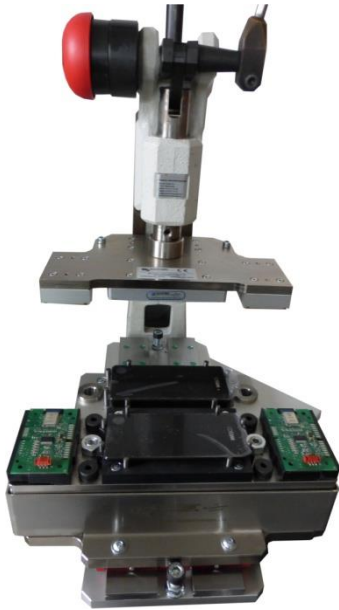
Screw robot

The HA-WR Series has been designed to meet the specific manufacturing requirements of electronic and precision mechanical products.

The special features are utmost versatility, accuracy and reproducibility of the operations.









Production of 3D printing parts in FFF (Fused Filament Fabrication) technology

Layer resolutions: 0.02 (very fine) - 0.6mm (very coarse)

Max. Print size: 226 x 226 x 206 mm

Printing material: PLA, ABS, CPE in various colors



ABB	ENGMATEC	HEKATRON	METABO
ACER	ETIMEX	HELAG-ELECTRONIC	RIA ELECTRONIC BTR
AUDI	ETO	HIRSCHMANN	MARLOK AUTOMOTIVE
BBS	FISCHER	JENOPTIK	SEUFFER
BEHR	FUNK	PAUL HORN	SKODA AUTO
BERU AG	GETRAG	KERMI	S. SIEDLE & SÖHNE
BMW	GEZE	KOCH	THYSSENKRUPP
BOYSEN	GRONINGER	LEBENSILFE	TIGRA
EBMPAPST	GWV	MAHLE	TRW AUTOMOTIVE
EGO	HÄFELE	MAN	VOLZ LUFTFILTER
ELRINGKLINGER	HEAD	MERCEDES BENZ	VW



